

ingredients needed:



**6500-36**  
 1-ea 36" Foil  
 Balloon



**6500-18**  
 1-ea 18" Foil  
 Balloon



**6500-09**  
 1-ea 9" Foil  
 Balloon



**972103**  
 Scarlet Red Sheer  
 Fabric Ribbon



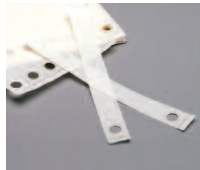
**21101**  
 Hearts Cello Sheets



**D31613**  
 Red Holographic  
 Curling Ribbon



**W27**  
 Heavy Weights™



**94291**  
 Adhesive Hang Tabs



**503**  
 Balloon Holder



**01569**  
 Glue Pan

**01560**  
 Glue Pills

equipment:



**HS870**  
 Heat Sealer



**BR74HG**  
 Dual Foil + Latex  
 Inflator



**831**  
 Mini Cool Aire®  
 Dual Pro™ Inflator



## directions:

Helium inflate the 36" foil balloon. Tie the balloon with 10' of curling ribbon. Properly secure the 36" balloon in the balloon holder.

Air-fill the 18" balloon with the new Mini Cool Aire® Dual Pro™ Inflator. For low pressure inflation, take large foil adapter and twist clockwise to remove from adapter post and put onto inflator nozzle. Inflate the 18" balloon until full. Fasten two Hang Tabs to the top of the balloon matching up the holes of the Hang Tabs. Set aside.

Remove the foil balloon tip from the inflator nozzle and place it back into its shelf on the adapter post. Turn the tip counterclockwise to turn the air pressure back to the original speed. Use the small foil balloon tip to air inflate the 9" balloon fully. Heat seal the balloon. Tape the stem of the 9" balloon back onto itself. Tape the weight on the back of the balloon. Fasten two Hang Tabs to the top of the 9" balloon.

To build the tower, remove the 36" balloon from the holder and cut the ribbon in half. Place the balloon back on the holder to secure. Tie the loose ribbon to the 9 inch balloon's adhesive tab. Tie the other end of the ribbon to the stem of the 18" balloon. Remove the 36" balloon from the holder and tie the ribbon to the 18" balloon's tab.

To add the final touches to this project, tie three bows using the scarlet sheer fabric ribbon. Tie this ribbon to the stem of the 36" balloon and to each tab on the 18" and 9" balloons.

To make the cello tufts, simply cut the cello sheet into squares. Gather the squares in the middle and dip into the glue pan. Glue tufts around each bow.

