

COLUMN KITS



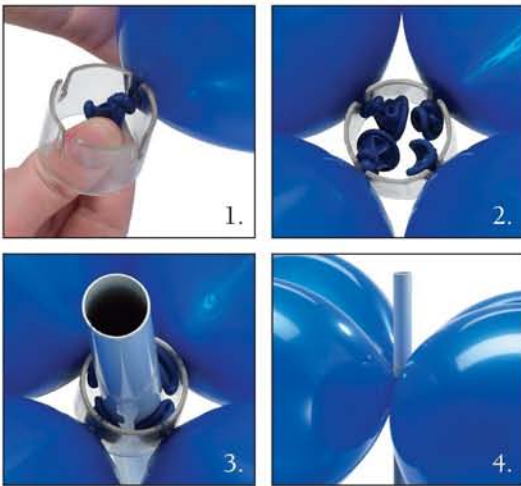
**Economical!
Reusable!**



83001
Deluxe Latex Balloon Arch + Column Kit
Plastic. Steel. Fiberglass. Aluminum
Creates 2-6½' Columns + 1-9'H x 11'W Arch
20 lb. 6½' High
20 Linear Feet
Balloons not included.

- Includes:
- Zip! Electric Inflator
 - 4-Bases
 - 4-Two-piece Extension Poles
 - Arch Cord
 - 60-Balloon Rings™
 - Instructions

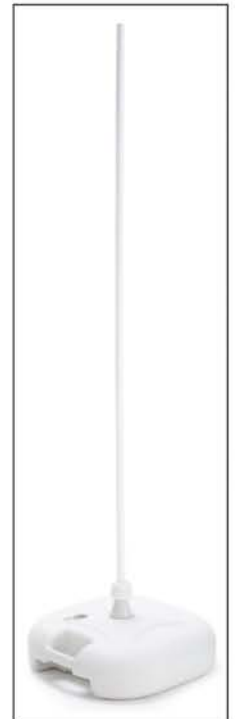
Arch requires 128-11" latex balloons
Columns require 32-11" latex balloons + 1 topper latex balloon each
Some assembly required.



83005 Notched Loops
Balloon Rings™. Plastic. 1"H x 1½"Diameter



new 8300Z Air Inflator
Zoom! Dual-Air. Electrical. 5"H x 8¼"W x 7"D



Fast + Easy!

1. Slip a tied balloon into notch with knot inside the ring.
2. Four inserted balloons make a quad.
3. Insert ring over extension pole (slits facing down) or arch cord to build columns or an arch.
4. Add balloons, positioning alternately. Top-off a column by attaching a latex balloon.

83003 Pole
Steel. 60" Long

